



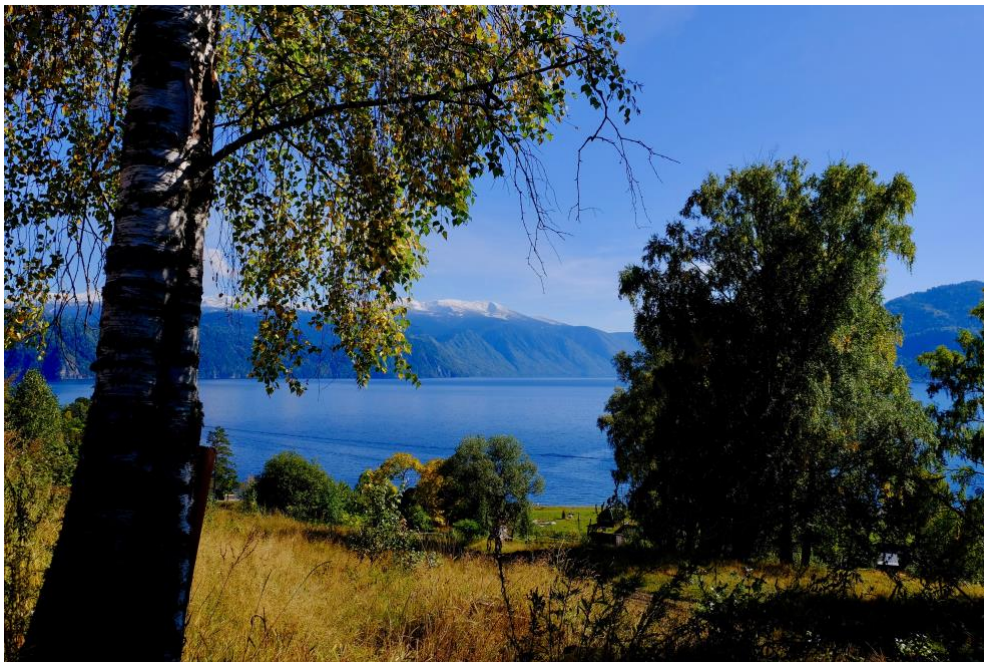
## RUSSIA. SOUTH SIBERIA

### **ALTAI** EXCURSION 2019 **July 28 – August 16**

CACSEE EXCURSIONS is designed to provide you with in-depth insight into a country or region in Central Asia and the Caucasus.

Our cross-disciplinary educational program covers topics such as physical and economic geography, history and culture, agriculture, biology, nature protection and resource management.

Participants will receive certificates at the end of the excursion. Students may also receive **ECTS-Credits**.



Our field trip addresses students, and young scholars of Biology, Geography, Environmental Sciences, Agriculture, Forestry, and of Eastern European Studies.

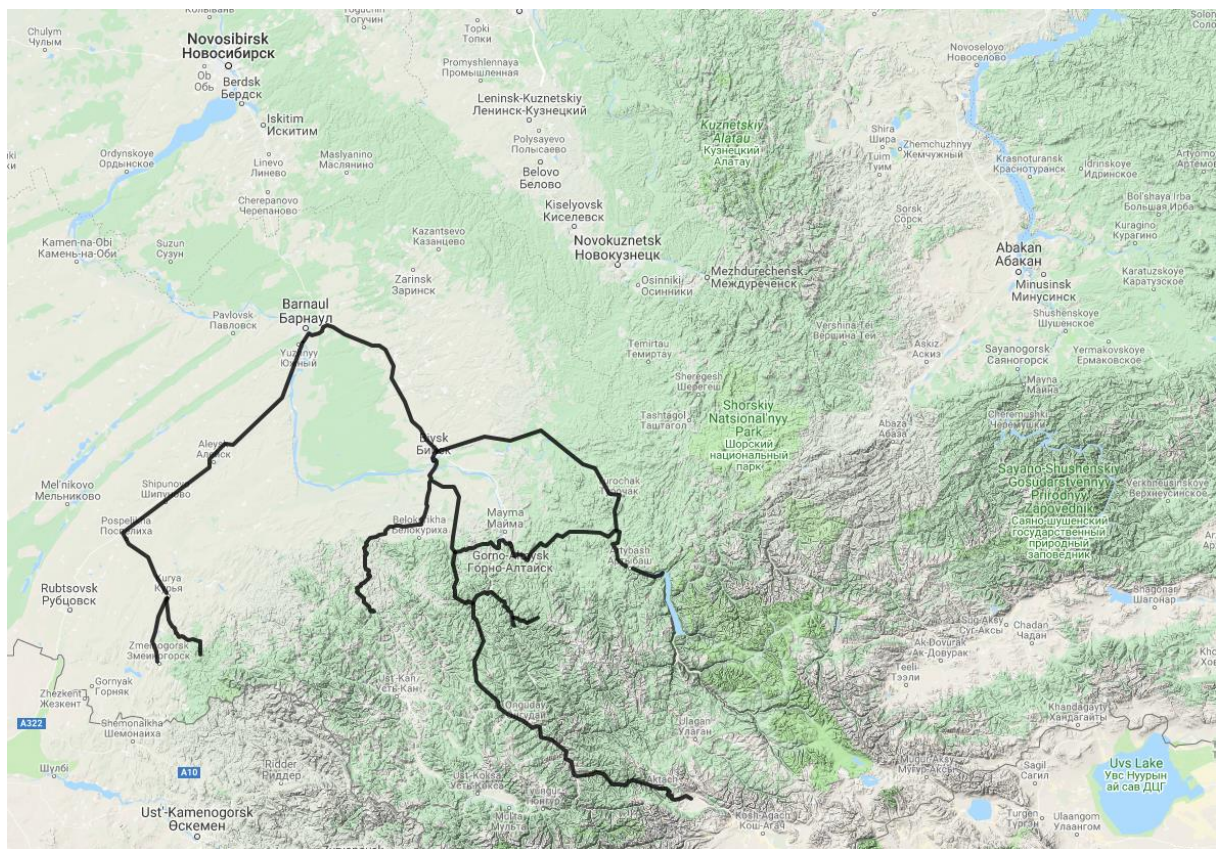
Environmentalists, Nature Lovers, Travelers and Adventurers of all ages are also most WELCOME!



## Route & Program

The excursion route and the draft of the program overview below are variable and may still change slightly. At this early stage of planning, we cannot guarantee that all excursion destination points will be reached, especially due to adverse circumstances (weather, road conditions, etc.).

There is the possibility to target other places according to the interest profile of the group. Please note that not all stops are listed in the program overview.



Our route in Altai is designed in close cooperation with Russian Geographical Society; Altai State University, Barnaul; and TourArgo. It offers you a unique insight into the geography of Altai Region in South Central Siberia, its natural landscapes, its cultural heritage and the region's present conditions in the framework of the global economy.



<b>Day</b>	<b>Program</b>	<b>Campsite</b>
1	Arrival at <b>Barnaul Airport</b> . Transfer to the campsite. Recreation & Adaptation.	Barnaul
2	City Tour in <b>Barnaul</b> . <i>History and Culture</i> .	Barnaul
3	Easy hikes in the surroundings of Barnaul. Safety Instruction. <i>Historical and Social Geography</i> .	Barnaul
4	Drive to the campsite in <b>Kolyvan</b> . <i>Physical Geography</i> .	Kolyvan
5	Daytrip to <b>Zmeinogorsk</b> . <i>Mining History and Resource Management</i> .	Kolyvan
6	Dayhike to the <b>Mount Sinyukha</b> . <i>Geomorphology and Ecology of Taiga</i> .	Kolyvan
7	Drive to the campsite in <b>Topol'noye</b> . <i>Ethnography and Traditional Land Use</i> .	Topol'noye
8	Dayhike to the Cascade <b>Waterfalls on Shinok</b> River. <i>Hydrogeology</i> .	Topol'noye
9	<b>Denisova Cave</b> . <i>Paleontology and Archeology</i> . Drive to the campsite in <b>Karakol</b> .	Karakol
10	Daytrip to the <b>Uch-Enmek</b> Protected Area. <i>Geomorphology and Archeology. Nomadic Culture</i> .	Karakol
11	Drive to the campsite in <b>Kuray</b> . <b>Kyzyl-Chin Valley</b> . <i>Geology and Mineralogy</i> .	Kuray
12	Drive to the base camp <b>Aktru</b> (Northern Chuy Range). <i>Geomorphology and Glaciology</i> .	Aktru
13	Hiking to <b>Aktru Glacier</b> . <i>Risk Management in Mountain Regions</i> . Drive back to the campsite Kuray.	Kuray
14	Drive to the campsite in <b>Yaloman</b> . <i>Hydrology and Water Management</i> .	Yaloman
15	Daydrive to <b>Artybash</b> .	Artybash
16	<b>Altai Nature Reserve</b> (UNESCO World Heritage Site). <i>Ecology of Lake Teletskoye and Tourism Development</i> .	Yaylyu
17	Drive back to Artybash. Recreation. <b>Rafting</b> (additional booking, ca. € 15).	Artybash
18	Daydrive to <b>Barnaul</b> .	Barnaul
19	City Tour in Barnaul. Sightseeing and Souvenirs.	Barnaul
20	Pack your bags and say Goodbye. Transfer to the <b>Barnaul Airport</b> .	Barnaul



## Organization & Logistics



### Accommodation

We usually camp at local farms and campsites. In some circumstances, it may be possible to rent tents and sleeping mats in Armenia. However, we strongly recommend bringing your own equipment.



### Transport

We offer cross-country busses or trucks for the transportation. They will be available during the whole duration of the excursion. This way we can stay flexible and will be able to offer different activities for smaller groups.



### Food

Local chefs and cooks will accompany the excursion. They will cook for us everyday. Of course, also **vegetarian or vegan**, if requested.

For day trips, picnics will be prepared. And in the evening we will gather around a campfire.



### Activities

The guided hikes in the mountains are not extreme tours and should be easily manageable for all participants under normal circumstances. In some areas, mountain hikes are somewhat more challenging due to their length and/or difference in altitude. This will be discussed in detail.



## Conditions of Participation

Participation costs apply for the specified duration and for a minimum participation of 20 persons. Due to changing costs for transportation and other services or in the case of a lower number of participants, the fee may increase by a maximum of 5%. The increase will be announced no later than one month prior to departure.

Standard price	€ <b>1280</b>
PhD Students, Teachers	€ <b>1180</b>
Students	€ <b>1080</b>

**5% off, if you have already traveled with CACSEE!**

*Participation fee **covers** the following expenses:*

1. Full board (3 meals a day) provided by the field kitchen (except for lunch and diner costs in restaurants during city visits).
2. Kitchen staff and food supplies.
3. Transport costs and the team of drivers.
4. Scientific supervision, lecturers and interpreters.
5. Entry charges for protected areas.
6. Accommodation (camping fees).

*Participation fee does **not cover**:*

1. Flight tickets to the destination.
2. Visa costs (**necessary for Russia!**).
3. Foreign health insurance.
4. Rental fees for tents (we strongly recommend to bring along your own tent and equipment. If needed – a tent can be rented onsite).



## Booking

### Application **DEADLINE**

**May 15, 2019**

1. Fill in the **REGISTRATION FORM** below, sign and scan.
2. Mail the scanned registration form and a copy of your **PASSPORT** to [info@cacsee.com](mailto:info@cacsee.com)
3. You will receive a confirmation of your **RESERVATION**.
4. Transfer the **PREPAYMENT** of € 600 to the bank account specified after reservation.  
Residual costs will be collected in cash after arrival in Russia.
5. Book your **FLIGHT to Barnaul** and convey your flight data to us.
6. After receiving the prepayment and the flight data your **BOOKING** will be completed.

In case of **CANCELATION** your deposit will be refunded, with a deduction of the cancellation compensation according to our cancellation policy.

More than 40 days	15 % of the prepayment
40 days to 30 days	30 % of the prepayment
30 days to 14 days	50 % of the prepayment
14 days to 7 days	70 % of the prepayment
7 days or fewer	90 % of the prepayment

For details, see the **General Terms and Conditions** on our website [CACSEE.COM](http://CACSEE.COM)

**LAST MINUTE** booking is possible if there are any free places or we will place you on a waiting list.

Please, contact: [info@cacsee.com](mailto:info@cacsee.com)



## CACSEE Registration Form

ALTAI EXCURSION 2019 July 28 – August 16	Participation Fee	
	1. Person	2. Person
SURNAME		
FORENAME		
DATE OF BIRTH		
ADDRESS		
PHONE		
E-MAIL		
STUDENTS University Field of study Semester		
Regular PARTICIPANTS Profession		

Tick **TWO** areas of studies or personal interests

Ecology	Forestry	Geology
Zoology	Agriculture	Geography

I have read the Conditions of Participation and I agree.  
I have read the General Terms and Conditions and I agree.

Place and Date: \_\_\_\_\_ Signature: \_\_\_\_\_